

EXPLANATORY PLAN OF EASEMENT OF PART  
OF STRATA LOT 3, BLOCK 'K',  
DISTRICT LOT 230, STRATA PLAN BCP

PLAN BCP

DEPOSITED IN THE LAND TITLE OFFICE AT  
NEW WESTMINSTER, B. C., THIS \_\_\_\_\_ DAY OF  
20 \_\_\_\_\_

PURSUANT TO SECTION 99 (1) (e) OF THE LAND TITLE ACT

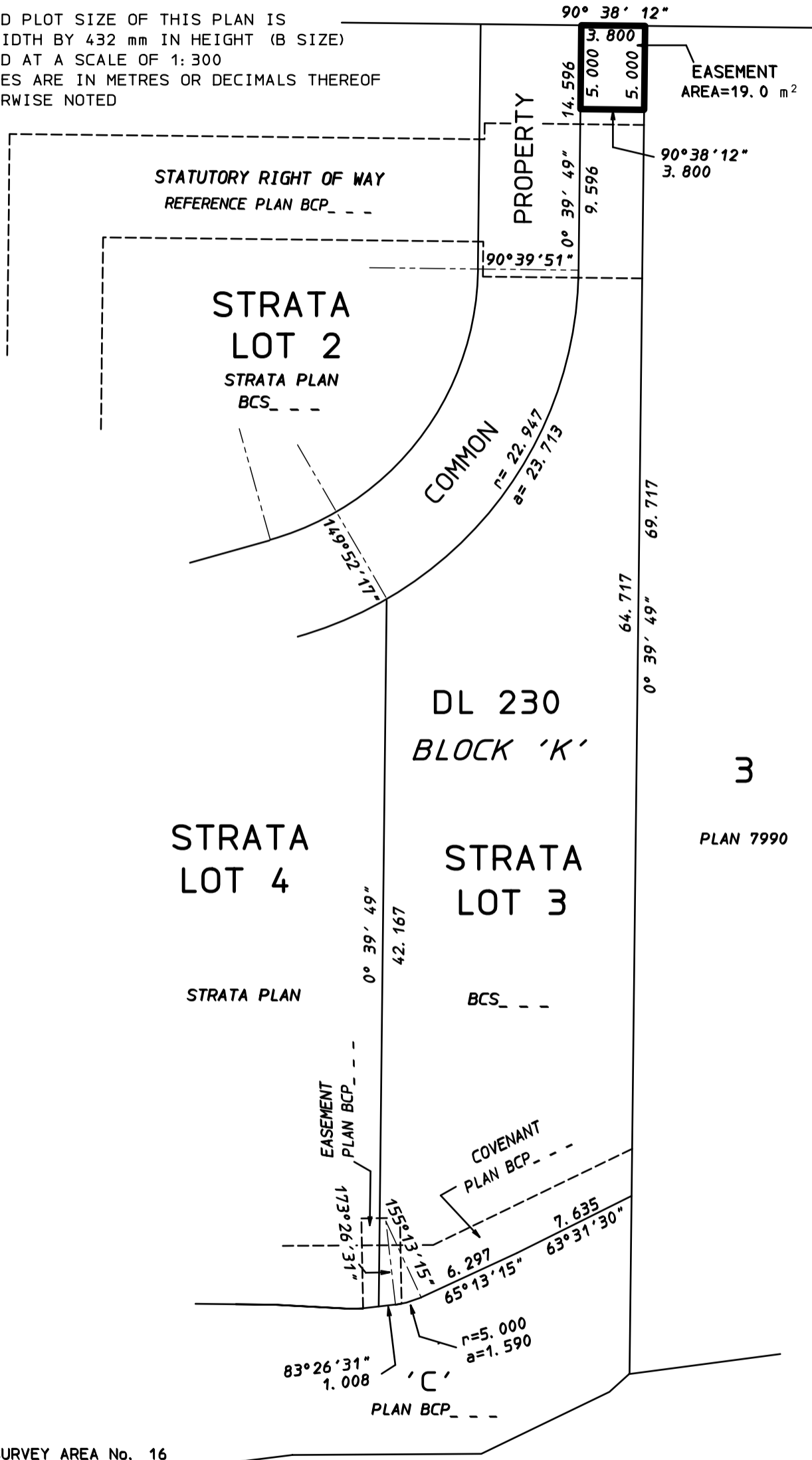
BCGS 92G036

REGISTRAR



DOLLARTON HIGHWAY

THE INTENDED PLOT SIZE OF THIS PLAN IS  
280 mm IN WIDTH BY 432 mm IN HEIGHT (B SIZE)  
WHEN PLOTTED AT A SCALE OF 1:300  
ALL DISTANCES ARE IN METRES OR DECIMALS THEREOF  
UNLESS OTHERWISE NOTED



LEGEND

INTEGRATED SURVEY AREA No. 16  
DISTRICT OF NORTH VANCOUVER

GRID BEARINGS ARE DERIVED FROM PLAN BCS

THE PLAN WAS COMPLETED AND CHECKED, AND THE CHECKLIST  
FILED UNDER # xxxxx, ON THE \_\_\_\_\_ DAY OF \_\_\_\_\_, 2009  
AND IS HEREBY CERTIFIED CORRECT IN ACCORDANCE WITH  
LAND TITLE OFFICE RECORDS

BURRARD  
INLET

THIS PLAN LIES WITHIN THE  
GREATER VANCOUVER REGIONAL DISTRICT

B. C. L. S.

3707-3739 DOLLARTON HIGHWAY  
M 3043-39 NVD

HOBBS, WINTER & MacDONALD  
B. C. LAND SURVEYORS

113 - 828 HARBOURSIDE DRIVE,  
NORTH VANCOUVER, B. C., V7P 3R9

TEL 604-986-1371 FAX 604-986-5204  
EMAIL: admin@hwsurveys.com